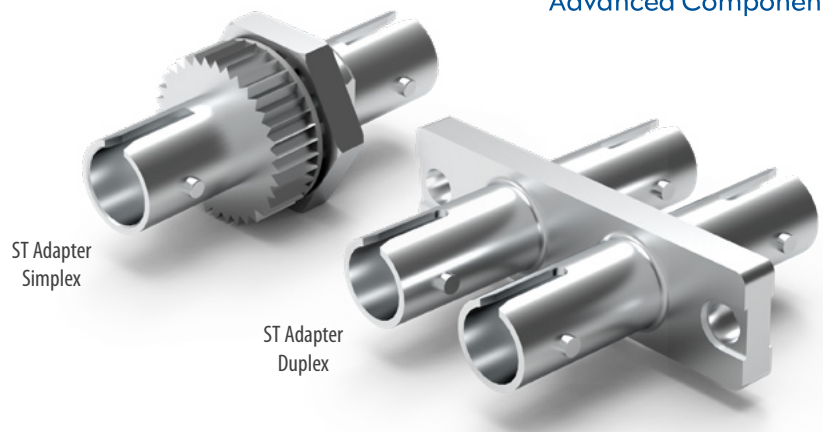


ST ADAPTER Simplex Duplex 216 / 316 Series



The SENKO ST Adapter is a versatile and reliable component designed to meet the demanding requirements of modern fiber optic networks. SENKO's ST simplex and duplex adapters are available with a robust metal housing, ensuring durability and longevity in various environments. These adapters feature a zirconia split sleeve, which provides high precision alignment, crucial for maintaining optimal performance in fiber optic connections. The mount style is horizontal, allowing for easy installation and integration into existing systems.

Additionally, hybrid adapters are available, offering flexibility in connecting different types of fiber optic connectors. The rugged metal housing not only enhances the adapter's durability but also ensures it can withstand harsh conditions. With options for both simplex and duplex configurations, the SENKO ST Adapter caters to a wide range of applications, making it an ideal choice for network professionals seeking reliable and high-performance connectivity solutions.

FEATURES

- Legacy metal bayonet body
- Durable and reliable
- Suitable for legacy applications
- Zirconia split alignment sleeves

APPLICATIONS

- Telecommunications
- Data centers
- Test and measurement equipment
- Industrial applications
- Medical equipment
- Military and aerospace
- Broadcast
- Medical equipment

KEY BENEFITS

- ✓ Legacy systems compatibility
- ✓ Simple installation
- ✓ Secure connection
- ✓ Cost effective
- ✓ Environmental resistance

Mechanical Data

	Value
Durability	200 matings per GR-326-Core
Fixing Method	D-hole (<i>simplex</i>), 2 hole screw fixing (<i>duplex</i>)
Housing Material	Plated metal
Alignment Sleeve Material	Zirconia
Fiber Count	Simplex (<i>1 channel</i>)
Connector Compatability	ST

Optical Data

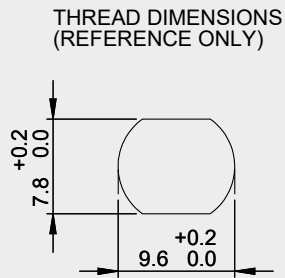
	Value
Typical Insertion Loss (dB)	0.10
Max Insertion Loss (dB)	0.20

Environmental Data

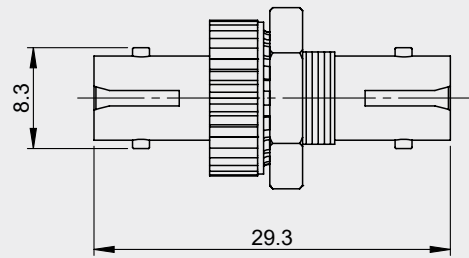
	Value
Operating Temperature	-40°C to +75°C
RoHS Compliance	Yes
REACH Compliance	Yes
Humidity Resistance	95%

Adapter Drawing

Panel Cut-Out



Side View

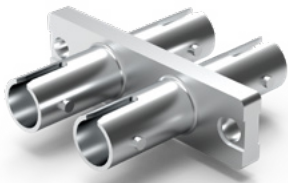


Note: 1. All dimensions are in mm.
2. Specifications subject to change without notice.

ORDERING



ST Adapter
Simplex



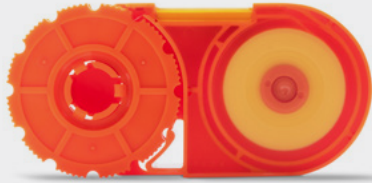
ST Adapter
Duplex

CODE	SLEEVE
216 Simplex Metal Housing	101 Zirconia Straight Split
316 Duplex Horizontal Metal Housing	

216 - 101 ORDER CODE example

Accessories - Production/Cleaning

Smart Cleaner™
Cassette
PN: SCK-CC-100



Smart Cleaner™
2.5 mm Clicker
PN: SCK-SS-250
Refill PN: SCK-SS-250-R



SC Crimp Tool
PN: CRT-401 SC, FC, ST One Piece Connectors
CRT-501 SC Connector Kit 132 Series
CRT-705 SC/LC 1.2 mm Connector



**2.5 mm NEOCLEAN
Cleaning Stick**
PN: CSK-02



Accessories - Interferometry

SUMIX Max W+ Inspection Scope
PN: SMX-MANTA-W+



The MANTA W+ inspection scope is designed for high-performance inspection of all types of single fiber and multi-fiber optical connectors, patch cords and bulkheads. The MANTA HM inspection scope is used to detect scratches, contamination and other surface defects as small as 0.75 μm on the end face of the connector.

SUMIX Max QM+ Inspection Scope
PN: MAX-QM+



The MAX-QS+ is a white-light and phase-shift interferometer for inspection of single fiber ST, FC, SC, LC, CS, SN, E2000™ (PC and APC), small format multi-fiber MT-RJ (PC and APC), SMA and special connectors. MAX-QS+ features portable design, autofocus, 100 micron scan range for fiber height and resolution of 1.1 μm .

Contact sales@senko.com
or visit our website for more details



SENKO[®]

Advanced Components

sales@senko.com
1-858-623-3300

senko.com/contact