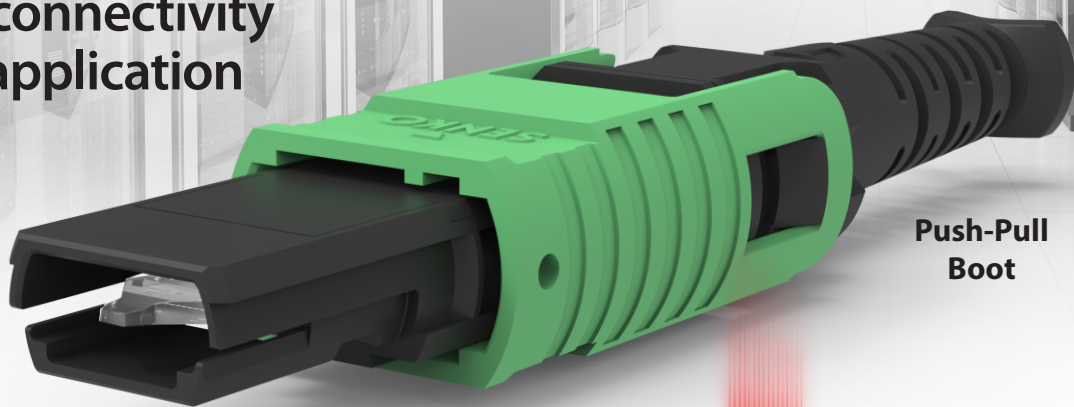


MPO **EBO EZ-WAY**[™]

EXPANDED BEAM

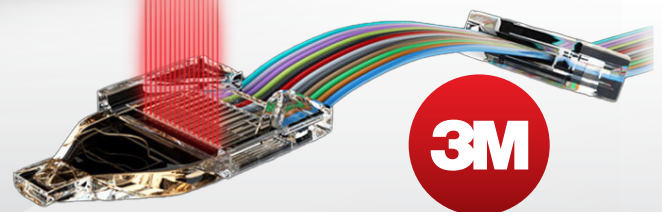
Precision connectivity
for every application



Low
Spring Force

Push-Pull
Boot

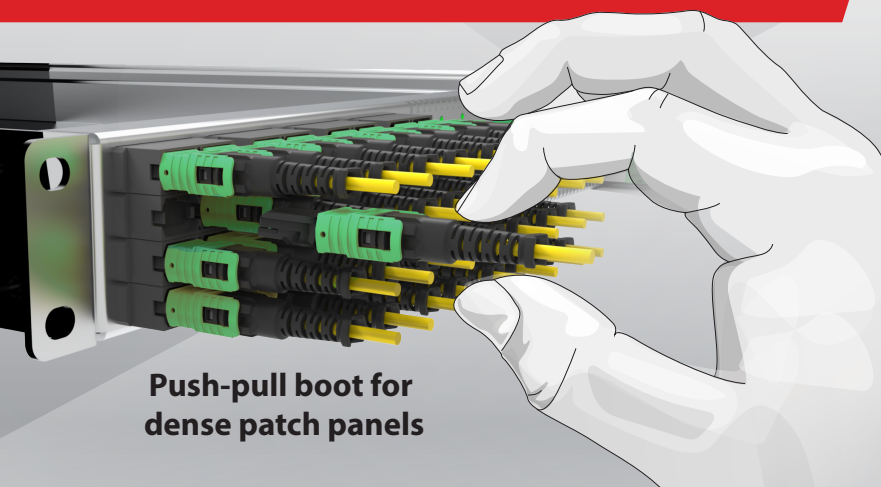
SENKO's MPO EBO EZ-WAY[™] connector incorporates the EZ-WAY[™] push-pull boot feature for high density applications coupled with the non-contact, lensed 3M[™] Expanded Beam Optical ferrule allowing it to be deployed in environments not always suited to the traditional physical contact products.



Integrating 3M Revolutionary
EBO Ferrule Technology

FEATURES

- SENKO's push-pull boot suitable for high density applications
- Resistant to dirt, debris, and vibration damage
- Compatible with standard MPO Adapters and SENKO 776 series of MPO SC Footprint adapters
- Designed in collaboration with Molex for interoperability and intermateability
- Non-contact, lensed 3M[™] Expanded Beam Optical ferrule

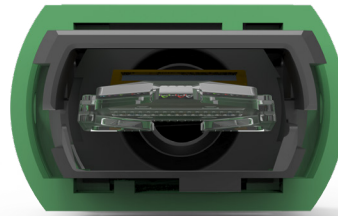


Push-pull boot for
dense patch panels

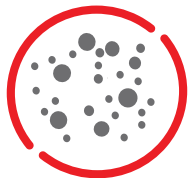
MPO EBO EZ-WAY™ CONNECTOR

EXPANDED BEAM PRECISION

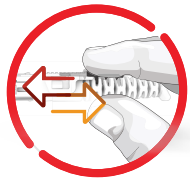
The non-contact ferrule ensures it is more resistant to dirt, debris, and damage from vibration, thus ensuring stable and reliable connections over time for optimal network performance. It is also compatible with standard MPO Adapters and the SENKO 776 series of MPO SC Footprint adapters, making it suitable for use in legacy applications and panel designs.



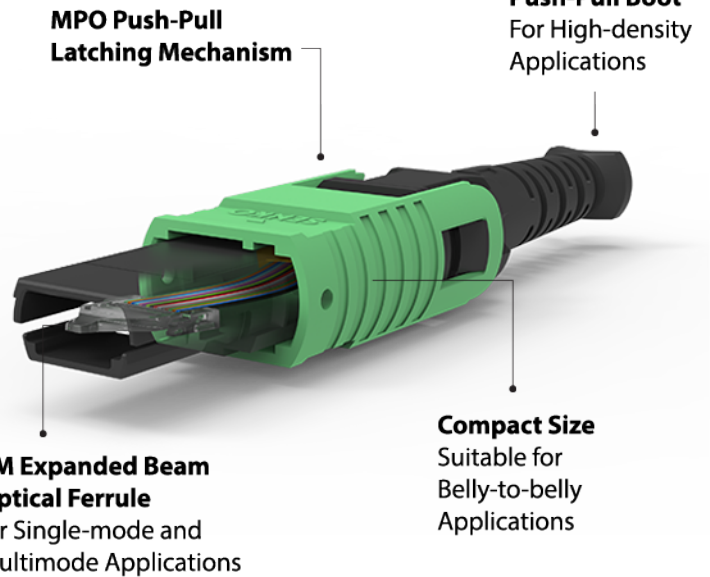
Fits standard MPO adapters



Dust Insensitivity



Push-pull boot



MPO Push-Pull Latching Mechanism

EZ-WAY Push-Pull Boot
For High-density Applications

3M Expanded Beam Optical Ferrule
for Single-mode and Multimode Applications

Compact Size
Suitable for Belly-to-belly Applications

Specifications

	Singlemode	Multimode
Durability	1000 mating cycles	
Insertion Loss (dB)*	<0.70	<0.30
Typical Return Loss (dB)*	≥55	≥25
Operating Temperature	-10°C to +60°C	

Based on master grade jumper to low loss random mating test