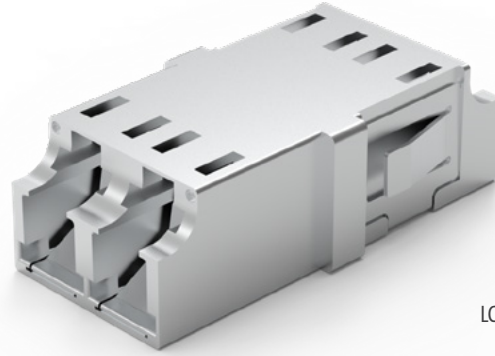


## **LC METAL ADAPTER 988M Series**



LC Metal Adapter

The SENKO LC Metal Adapter is a connectivity component engineered for environments where a more durable and robust solution is required, thanks to its durable metal housing that can provide EMI shielding. The adapter is designed to incorporate an integral, automatic, hands-free shutter mechanism that safeguards the connector from dust contamination and attenuates laser light upon the removal of the mated connector, aligning with IEC TR 62627-08 power standards. The adapter's dust protection meets the IP5X standard, ensuring that it is safeguarded against dust ingress that could compromise its functionality. This is especially beneficial in industrial environments where dust and debris are common. The feature of traceability with a visible light source is an added advantage for maintenance and troubleshooting.

In summary, the SENKO LC Metal Adapter is a well-rounded solution that merges durability, safety, and user convenience, making it an essential component for any system that demands reliable fiber optic connections. Its design and protective features offer assurance that both the equipment and users are protected from potential risks.

### FEATURES

- Optional integrated shutter mechanism for eye safety and dust protection
- Visible light source traceability
- Durable, EMI shielded metal housing
- Color-coded dust caps
- Compatible with SC simplex footprint

### APPLICATIONS

- Telecommunications
- Data centers
- Local area networks (LANs)
- Fiber to the home (FTTH)
- Enterprise networks
- Medical equipment
- Industrial applications
- Military and aerospace
- Broadcasting

### KEY BENEFITS

- ✓ **Eye safe optional shutter**
- ✓ **Color coded for simplicity**
- ✓ **Robust metallic construction**
- ✓ **Exceptional durability**
- ✓ **EMI shielded metal housing**
- ✓ **Simplified installation with color coded dust caps**

## Mechanical Data

	Value
Durability	500 matings
Fixing Method	Snap fit ( <i>adapter without flange</i> ) or screw and nut ( <i>adapter with flange</i> )
Housing Material	Nickel plated zinc
Alignment Sleeve Material	Zirconia
Dust Protection Method	Color coded removable dust plugs
Fiber Count	Duplex ( <i>2 channel</i> )
Dust Shutter Mechanism	Inner shutter - optional

## Optical Data

	Value
Typical Insertion Loss (dB)*	0.10
Max. Insertion Loss (dB)*	0.20

\* Based on master grade jumper to low loss random mating test

## Environmental Data

	Value
Operating Temperature	-40°C to +75°C
RoHS Compliance	Yes
REACH Compliance	Yes
Humidity Resistance	95%

## Adapter Drawing

**Panel Cut-Out**

MOUNTING HOLE DIMENSIONS  
PANEL THICKNESS 1.7mm MAX.  
(REFERENCE ONLY)

**Front View**

**Side View**

**Top View**

Note: 1. All dimensions are in mm.  
 2. Duplex with flanges, no shutter shown, other options are available upon request.  
 3. Specifications subject to change without notice.

## ORDERING

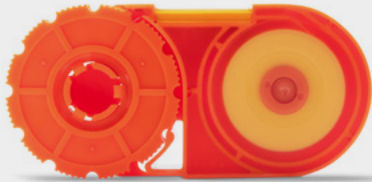


CODE	TYPE	DUST CAP/INTERNAL COLOR	SLEEVE TYPE	SHUTTER
988M	3S Duplex with Flange	1 Blue	1 Zirconia	N No Shutter
	4S Duplex without Flange	2 Green	2 Metal	A Internal Shutter
		3 Beige		

988M - 3S11 - N ORDER CODE example

Accessories - Production/Cleaning

**Smart Cleaner™**  
Cassette  
PN: SCK-CC-100



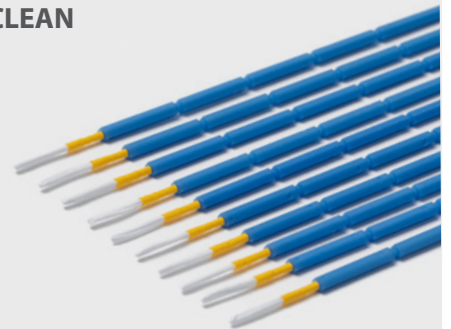
**Smart Cleaner™**  
Mini 1.25 mm Clicker  
PN: SCK-SS-M-C125  
Refill PN: SCK-SS-CS-R



**Smart Cleaner™**  
1.25 mm Clicker  
PN: SCK-SS-CS  
Refill PN: SCK-SS-CS-R



**1.25 mm NEOCLEAN  
Cleaning Stick**  
PN: CSK-01



Accessories - Interferometry

**SUMIX Manta W+ Inspection Scope**  
PN: SMX-Manta-W+



- Inspects 12 fiber in 2.6 seconds, 24 fiber in 4.5 seconds
- 0.5µm defect detection
- Inspection tips for MPO, CS, SN, LC available

**SUMIX Max QM+ Inspection Scope**  
PN: MAX-Quantum



- Inspects 12 fiber in 2.6 seconds, 24 fiber in 4.5 seconds
- 0.5µm defect detection

# SENKO<sup>®</sup>

Advanced Components

[sales@senko.com](mailto:sales@senko.com)  
1-858-623-3300

[senko.com/contact](https://senko.com/contact)