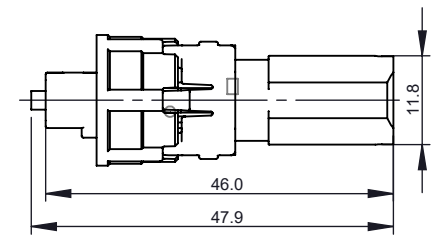
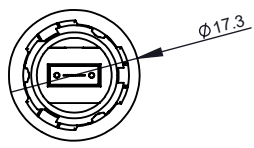
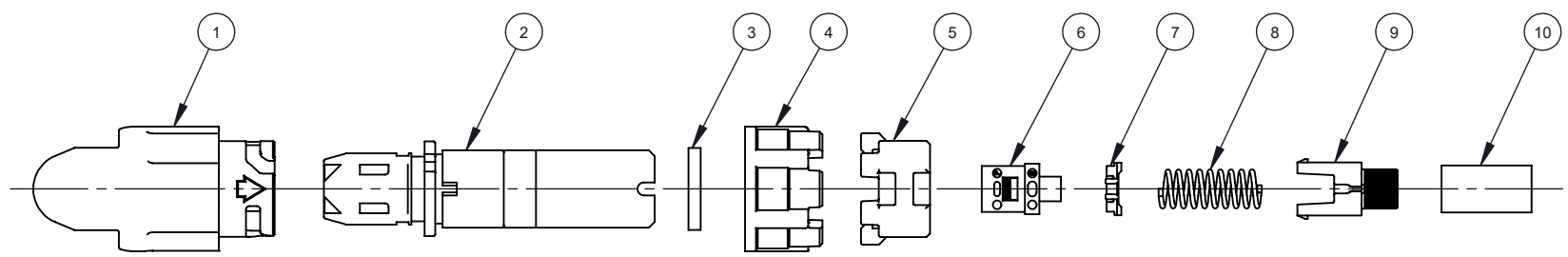


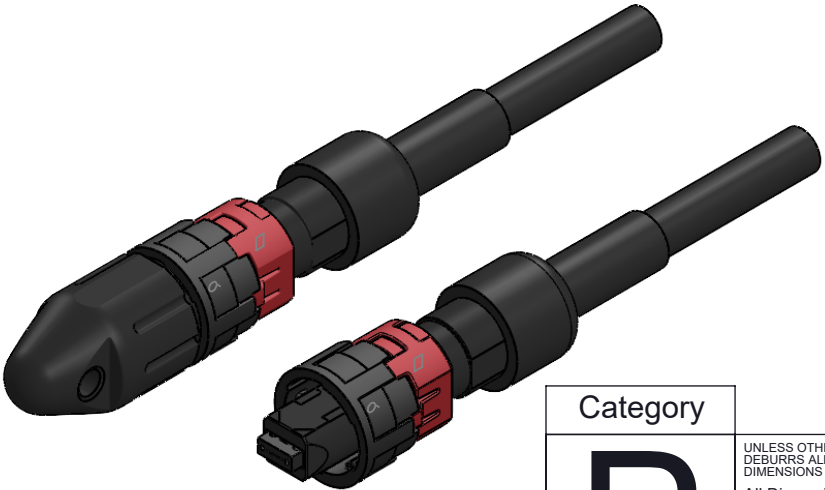
NOTES:
1. ALL MATERIALS TO BE COMPLIANT TO RoHS, REACH SVHC AND UL 94 V-0

REVISIONS				
ZONE	REV.	DESCRIPTION	DATE	APPROVED
	1	PRELIMINARY	1/16/2020	



CONNECTOR CODE	CONNECTOR TYPE	FERRULE TYPE	(FERRULE INFO)	FIBER COUNT	CABLE SIZE	OPTIONAL DUST CAP
IP09C1	MF MPO FEMALE	1 SM STANDARD	MT-01-SS12-2	12	5.5	D WITH IP DUST CAP
		2 MM STANDARD	MT-01-MS-12-2			
		3 SM LOW LOSS	MT-01-SL12-2			
		4 MM LOW LOSS	MT-01-ML12-2			

3:1 HEAT SHRINK TUBES DIMENSIONS (REFERENCE ONLY)		
	INNER DIAMETER (mm)	LENGTH (mm)
1.	6.35	51
2.	12.7	32



ITEM NO.	PART NUMBER	PART DESCRIPTION	MATERIAL	QTY.
1	IP09DC1-01	IP9 CONNECTOR DUST CAP	TP, BLACK	1
2	IP09-HCS-MP01	IP9 CONNECTOR HOUSING, MPO	TP, BLACK	1
3	IP-ORNG-F-8.0-1.7	IP9 SQUARE RING, CONNECTOR HOUSING	RB	1
4	IP09-BYN-01	IP9 CONNECTOR BAYONET NUT	TP, BLACK	1
5	IP09-LKR-04	IP9 LOCK RING	TP, RED	1
6	MT-01-XXXX-X	MT FERRULE WITH FERRULE BOOT	TP	1
7	705-PKG-01	MPO BAYONET CONNECTOR GENDER CHANGEABLE PIN KEEPER IN 1.8mm THICKNESS FOR 4-12F, 24F APPLICATION	TP	1
8	703-SPR-10N-07	MPO CONNECTOR 10N SPRING FOR THIN PIN KEEPER, L16.5mm	SUS	1
9	703-RB03-0A	MINI MPO 4.0-5.5mm BACK POST SUBASSEMBLY	PEI	1
10	702-CR01-0D	MPO 5.5mm CRIMP RING	AL	1

Category

P

UNLESS OTHERWISE SPECIFIED:
DEBURRS ALL SHARP EDGES.
DIMENSIONS ARE AFTER FINISH.

All Dimensions are in mm

TOLERANCES: X. = ±
X = ±0.2
XX = ±0.10
.XXX = ±
∠ = ±2°

Note: Heat Shrink tubes not included

Drawn By: ENG. DEPT. | Checked By: Eng. Dept. | Material: SEE BOM | Scale: Free

SENKO
Advanced Components

Part Number: IP09C1-MFX12-5.5-D-B02
Description: IP9 MPO FEMALE 12F CONNECTOR FOR 5.5mm CABLE

DWG# P-ENM20-061 | Rev. 1 | Sheet 1