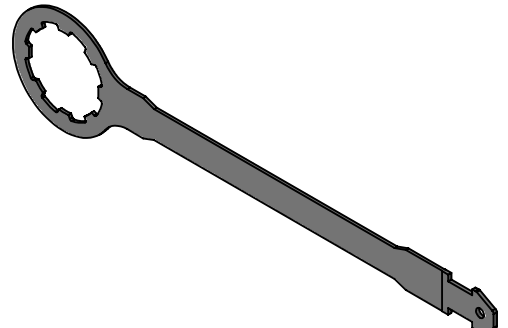
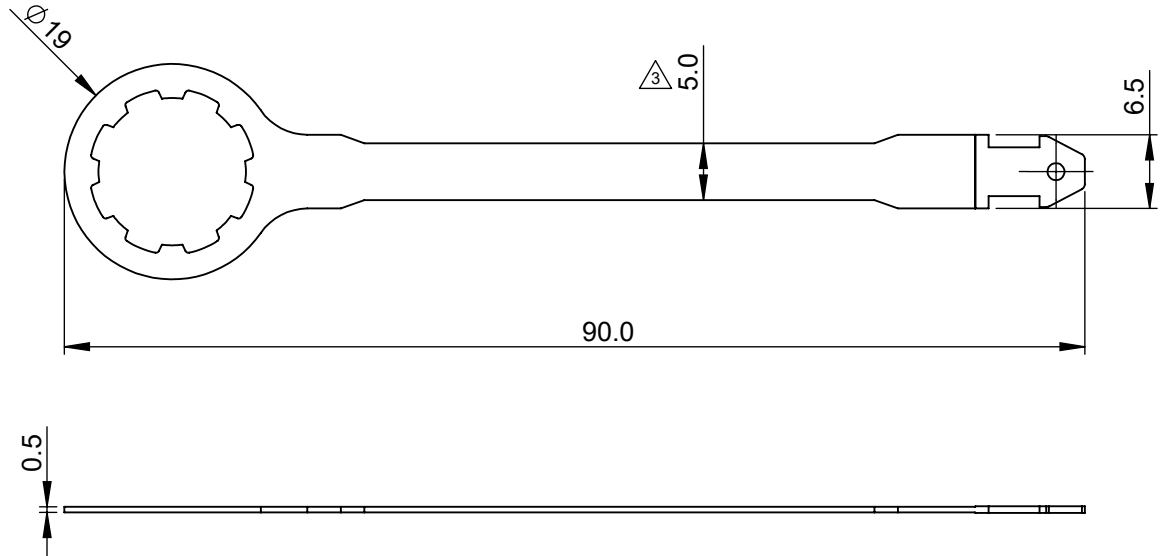


NOTES:
 1. ALL MATERIALS ARE COMPLIANT TO RoHS, REACH SVHC AND UL 94 V-0
 2. ONE OR MORE TRADEMARKS OWNED BY SENKO ADVANCED COMPONENTS PATENTS @ www.senko.com/patents

REVISIONS				
ZONE	REV.	DESCRIPTION	DATE	APPROVED
	1	PRELIMINARY	7/27/2020	
4A	2	COLOR UPDATED	9/1/2020	KEITH CHUNG
6C	3	DESIGN UPDATED	3/5/2021	KEITH CHUNG

CODE	TYPE	COLOR		
IP09	IP SIZE 9 - DAL	DUST CAP ADAPTER TETHER	B	BLACK
			Y	YELLOW
			R	RED
			G	GREEN
			L	BLUE
			P	PURPLE
			W	WHITE
			A	AQUA



Category	
P	UNLESS OTHERWISE SPECIFIED: DEBURRS ALL SHARP EDGES. DIMENSIONS ARE AFTER FINISH. All Dimensions are in mm TOLERANCES: X. =± X =±0.2 .XX =±0.1 .XXX =± \angle =±3

Drawn By: ENG. DEPT.	Checked By: ENG. DEPT.	Material: NYLON	Scale: Free
		Part Number: IP09-DAL-X	
		Description: IP09 DUST CAP ADAPTER TETHER	
DWG# P-ENM18-254		Rev. 2	Sheet 1