

MPC | Metallic PIC Connector

Increase in Shoreline Density

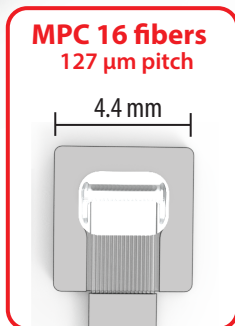
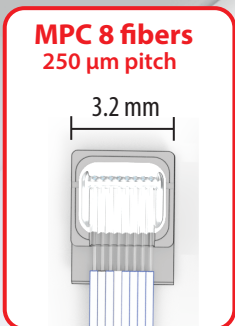
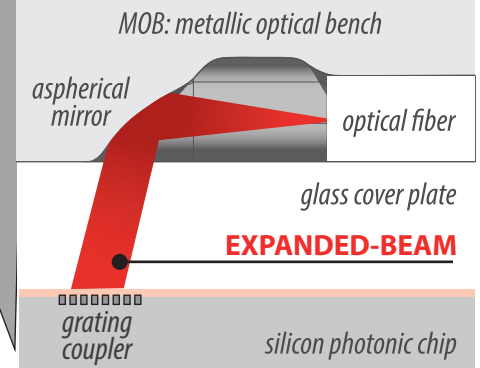
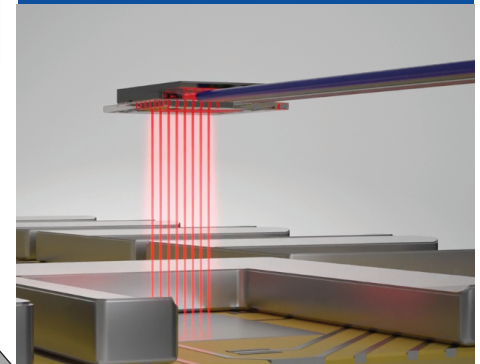
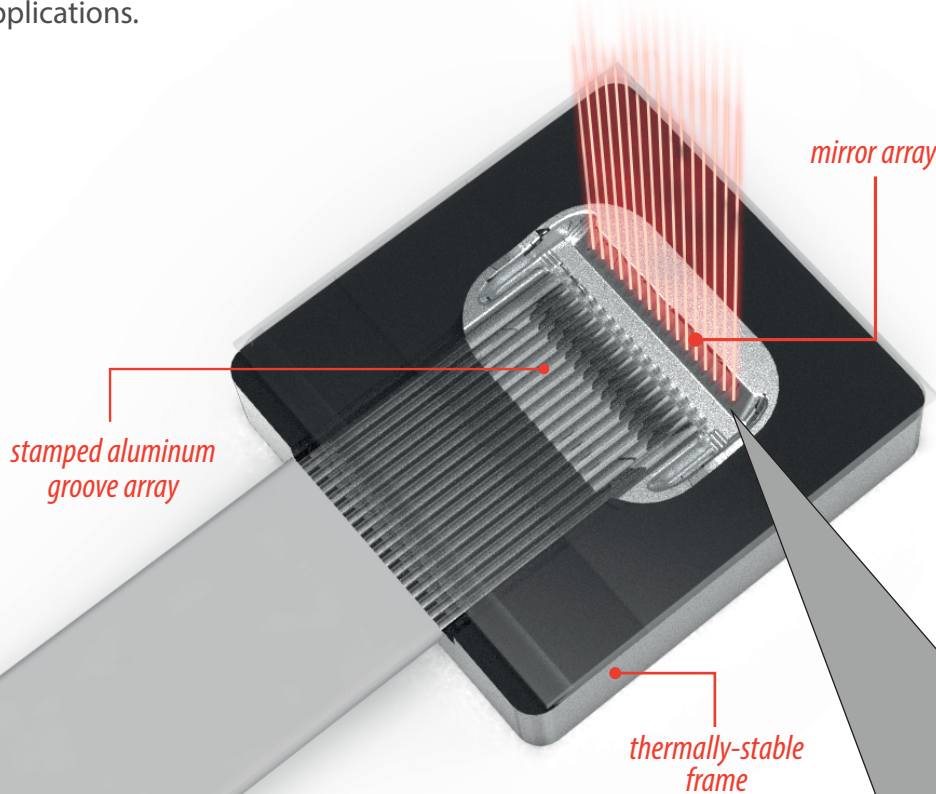
Metallic PIC connectors are constructed from stamped metallic optical benches. They include micro mirror arrays for folding, focusing, or expanding light beams between optical fibers and photonic devices. Mirror designs are available for multimode and single-mode applications.

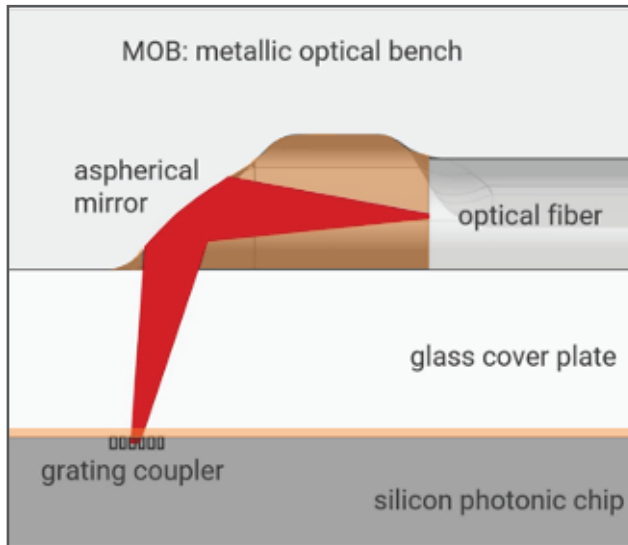
FEATURES

- Compatible with SM and PM fiber
- Expanded-beam capability
- Low profile

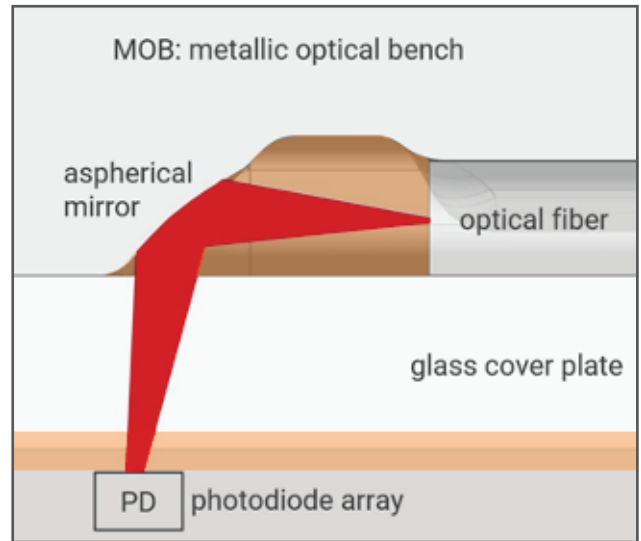
APPLICATIONS

- Next-generation Pluggable Transceivers
- Co-Packaged Optics CPO
- Custom Applications (Sensors)

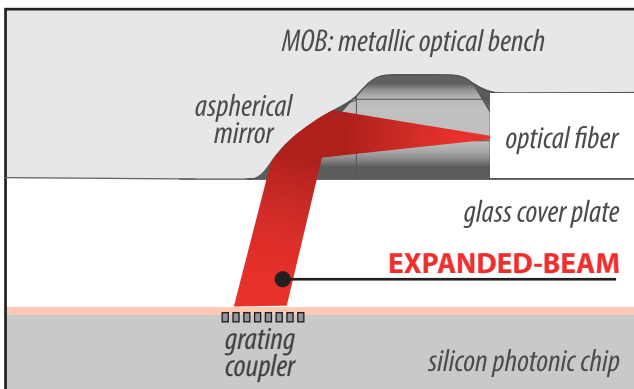




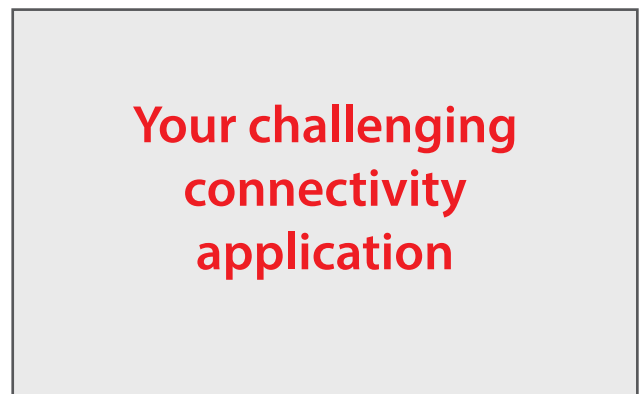
silicon photonics



photodiode arrays



expanded-beam



custom application