

Smart Cleaner™ for Fiber Cleaning



Smart Probe™ for Fiber Inspection



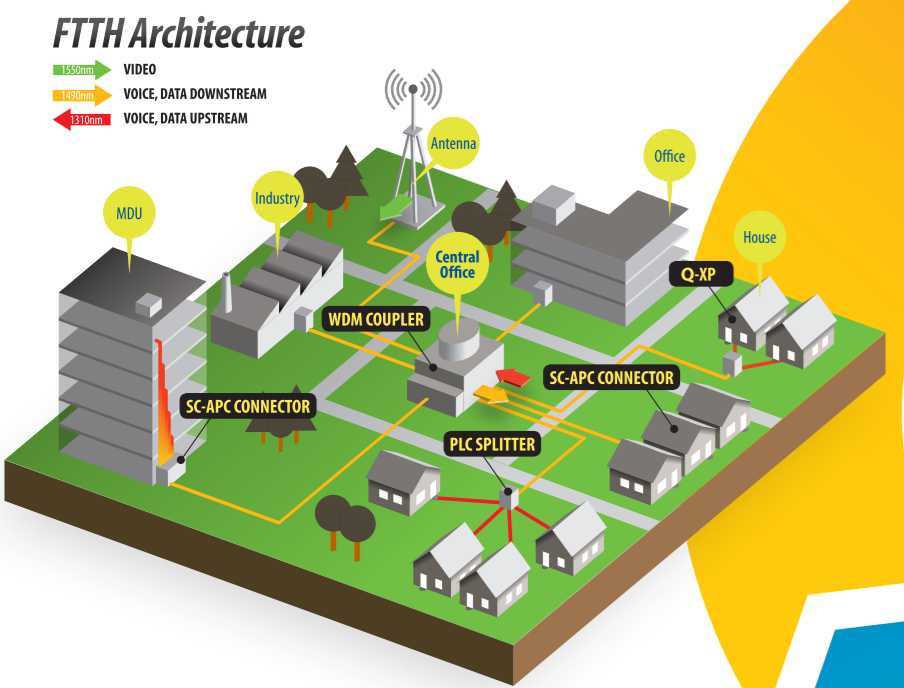
- WiFi device
 - IEC 61300-3-5 analysis
 - 5 hours battery life
 - Customized handle lengths
- SENKO Vue 3 App

One-Click® Cleaner Fiber Optic Connector Cleaner



For more reliable network deployment SENKO supports all the needs for fiber network maintenance. Cleaning solutions for various connectors are available with easy and quick inspection scope. Customized field inspection kits are available upon request

FIBER NETWORK MAINTENANCE



Clean,
Inspect
and Test

We're on your way home

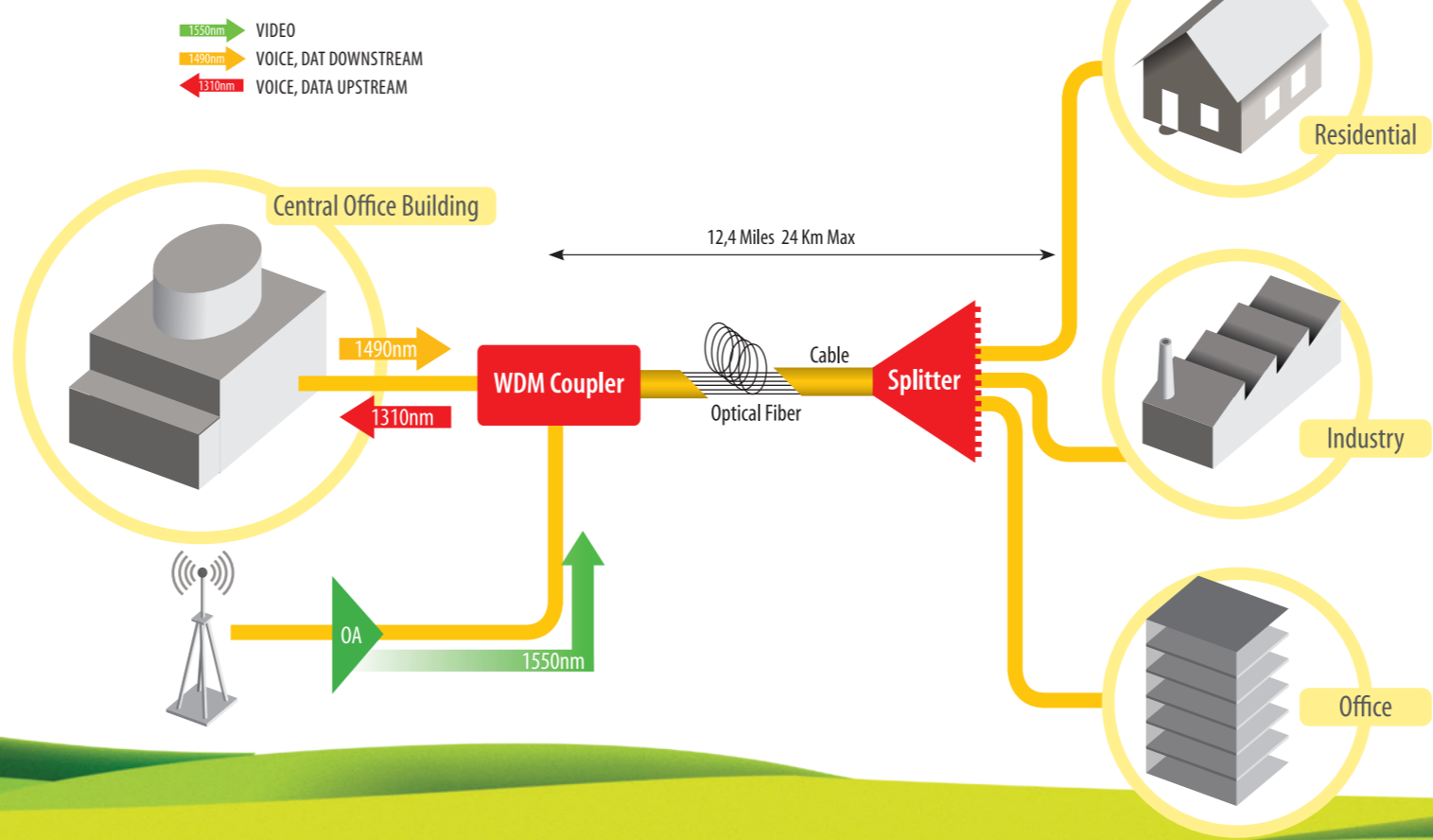


SENKO®
Advanced Components

FTTH

FIBER TO THE HOME

FTTH PON Architecture



SENKO ADVANCED COMPONENTS, INC.

Americas
USA EAST 1-888-32-SENKO
USA WEST 1-858-623-3300
TEXAS 1-972-661-9080
Sales-Americas@senko.com

Asia
HONG KONG +852-2121-0516
SHANGHAI +86-21-5830-4513
SHENZHEN +86-755-2533-4893
Sales-Asia@senko.com

Europe
UK +44 (0) 118 982 1600
ITALY +39 011 839 98 28
POLAND +48 71 776 0737
Sales-Europe@senko.com

Asia Pacific
AUSTRALIA +61 (0) 3 9755-7922
Sales-Asia-Pacific@senko.com
Middle East North Africa
DUBAI +971 4 8865160
Sales-MENA@senko.com

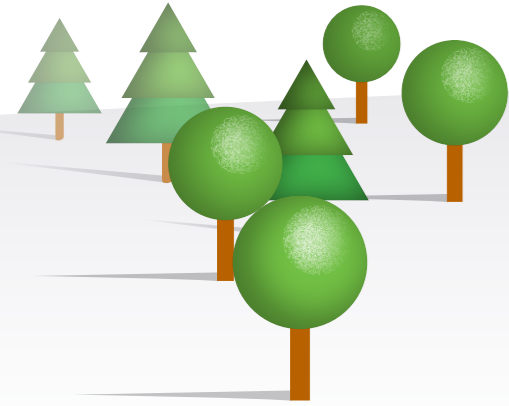
Japan
TOKYO +81 (0) 3 5825-0911
Sales-Japan@senko.com

CALL 1-888-32-SENKO

www.senko.com

Cost effective passive devices that enable high performance solutions for Fiber to the Home networks

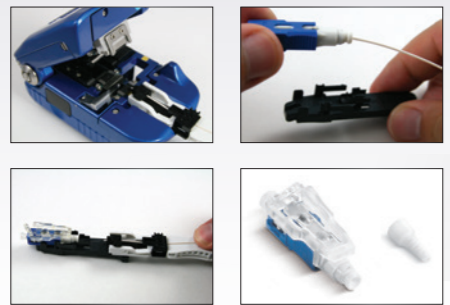
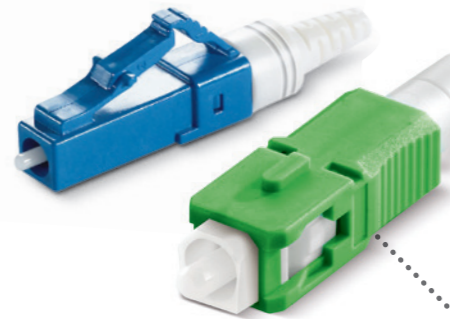
FTTH NETWORK



Our aim is to continue a legacy of product innovation to help meet the unique and evolving requirements of FTTH networks.

XP FIT PLUS

No Epoxy, No Polishing
Quick assembly
in under 2 minutes



The XP Fit Plus is a pre-polished, pre-assembled connector compatible with the standard SC connector that uses index matching gel. Instead of epoxy, an internal mechanical grip, gently but effectively holds the fiber in place and can be installed in under 2 minutes. Without polishing or adhesives the XP Fit Plus makes on site installations quick and easy.

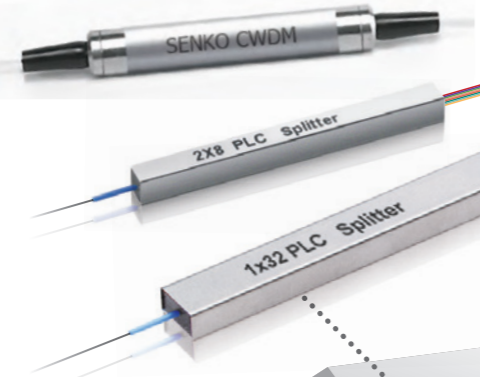
XP TOOL KIT

The XP Fit Tool Kit contains everything needed for installation of the SC and LC XP FIT PLUS connectors.



WDM / PLC

Passive devices with highest quality and performance



SENKO offers a variety of configuration of WDM devices. Reliable quality and performance can be achieved.

PLC Splitter Modules are manufactured with Plasma Chemical Vapor Deposition (P-CVD) technology, and its patented fabrication process, for providing stable optical specifications. The modules' silica on silica waveguide and optical fiber array are tested to Telcordia GR-1209 and GR-1221.

PLC Splitter Chips feature stable optical character, and are suitable for various applications including Splitters and Combiners.

IP-SOLID

Optimized for FTTH deployment



The IP-Solid connector is designed as HFOC compatible and optimized for FTTH network deployment where single fiber drop is required. Connector is available as a kit with easy and simple termination.

Simple Termination Process

Simple connection
Simple connection method to RRU using IP-68 connectors

IP-9 SERIES

Smallest footprint weatherproof connector



The SENKO IP-9 series is the smallest footprint outdoor connector with connector OD 17.3mm and bulkhead adapter OD 20.0mm. With its small size, SENKO's patented safe lock ring is implemented for secured mating.

Weatherproof
Ideal choice for any harsh environmental applications

Simple connection
Simple connection method to RRU using IP-68 connectors

1-Fiber (SC), 2-Fiber (SN), Multi-Fiber (MT) configuration is available in all same footprint.

Bulkhead type and inline type adapters are available in all configuration.

IP-FAMILY

IP-68 rated connector with one footprint, various configurations



New line of IP 68 Connectors exceed ODVA requirements
The SENKO IP-LC Connector is designed to exceed the requirements of ODVA, the connectors meet IP68 environmental sealing ratings and are the ideal choice for a low cost/easy to use solution in Industrial, Fiber to the Antenna (FTTAs), or any other harsh environmental applications.

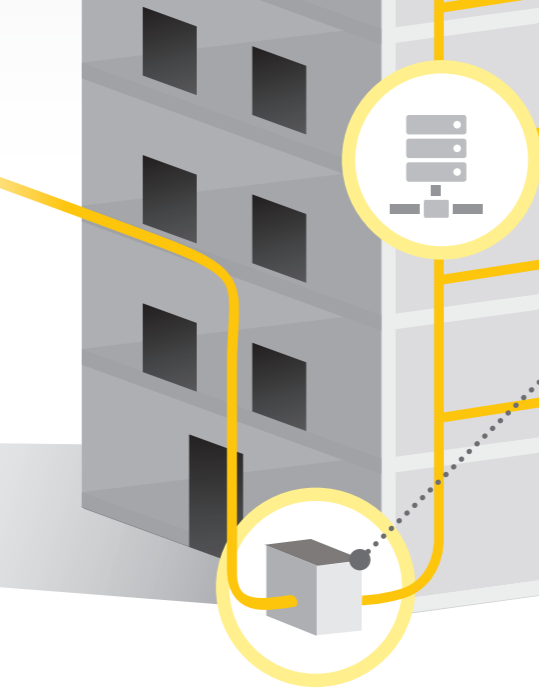
Low Insertion Loss
Incorporating the SENKO LC connector yields exceptionally low insertion loss for Singlemode applications and provides connector color coding options in Multimode applications for differentiation of OM3 or OM4 constructions.

Simple bayonet locking system
The IP-LC Connector is designed according to the IEC60603-7 interface standard, which allows mating to other similar mechanical locking systems.

IP-16 SN



Multi Dwelling Unit



IP P&P FO KIT

Saving time and space for more efficient installation



Various options available:
Multi-Fiber to Single-Fiber, PLC, WDM

SENKO Advanced Components provides a selection of cost effective passive devices that enable high performance solutions for Fiber to the Home networks.

SENKO's Fiber to the Home products include:

- XP FIT PLUS
- WDM COUPLER
- PLC SPLITTER
- IP-9 SERIES
- IP-16 SERIES
- IP-SOLID
- IP P&P FANOUT