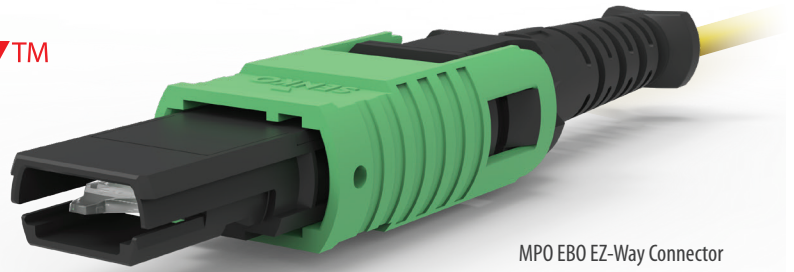
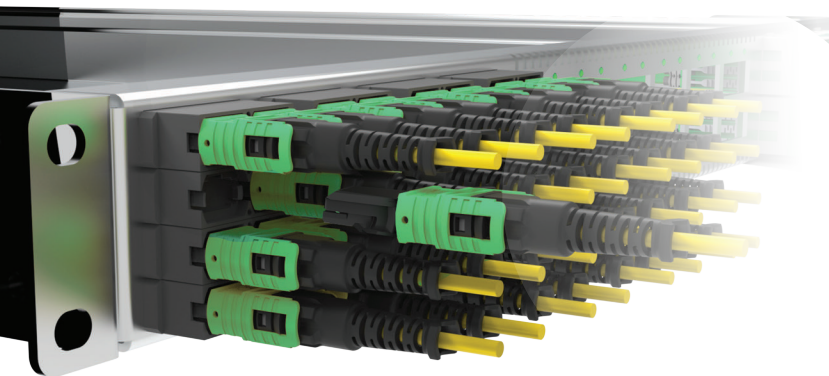


MPO EBO EZ-WAY™ CONNECTOR Expanded Beam Optics

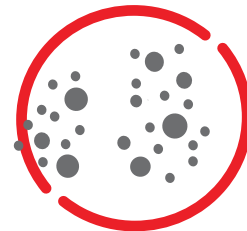


MPO EBO EZ-Way Connector

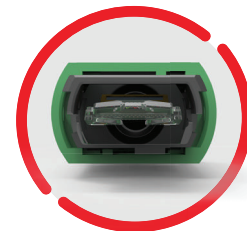
SENKO's MPO EBO EZ-WAY™ connector is designed for next-generation data centers, telecom networks, and harsh-environment applications, offering a cutting-edge solution for high-speed optical interconnects. This next gen design incorporates the SENKO EZ-WAY™ push-pull Boot feature for high density applications coupled with the non-contact, lensed 3M™ Expanded Beam Optical Ferrule, allowing it to be deployed in environments not always suited to the traditional physical contact products. The non-contact ferrule ensures it is more resistant to dirt, debris, and damage from vibration, thus ensuring stable and reliable connections over time for optimal network performance. It is also compatible with standard MPO Adapters and the SENKO 776 series of MPO SC Footprint adapters, making it suitable for use in legacy applications and panel designs.



**Push-pull boot for
dense patch panels**



**Dust
Insensitivity**



**Fits Standard
MPO Adapters**

FEATURES

- SENKO's push-pull boot suitable for high density applications
- Resistant to dirt, debris, and vibration damage
- Compatible with standard MPO Adapters and SENKO 776 series of MPO SC Footprint adapters
- Designed in collaboration with Molex for interoperability and intermateability
- Non-contact, lensed 3M™ Expanded Beam Optical Ferrule



**Integrating 3M revolutionary
EBO ferrule technology**

Specifications

| | Singlemode | Multimode |
|------------------------------|--------------------|-----------|
| Durability | 1000 mating cycles | |
| Typical Insertion Loss (dB)* | <0.70 | <0.70 |
| Typical Return Loss (dB)* | ≥55 | ≥25 |
| Operating Temperature | -10°C to +60°C | |

* Based on master grade jumper to low loss random mating test

APPLICATIONS

- Telecommunications
- Next-generation data centers
- Harsh environments
- Industrial applications

KEY BENEFITS

- ✓ **Easy Installation and extraction**
- ✓ **Dust insensitivity**
- ✓ **Fits standard MPO adapters**