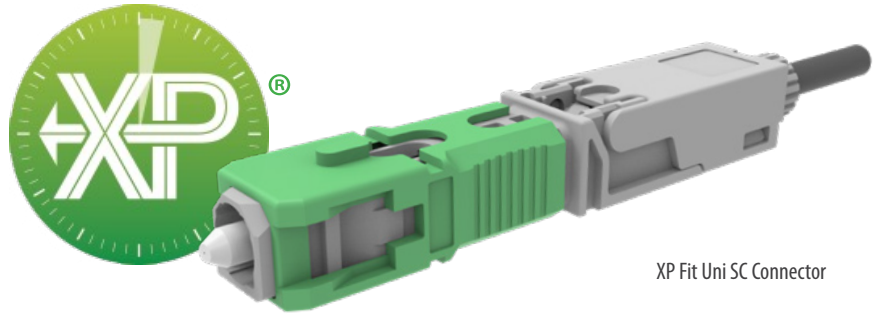


XP FIT UNI SC[®] **CONNECTOR** Series 319



XP Fit Uni SC Connector

The Senko XP Fit Uni SC™ is a versatile connector that simplifies fiber optic cable installations. It's compatible with a variety of cable types and sizes, including 250 µm, 900 µm, 2 mm, 3 mm, 1.6x2 mm flat, and 2x3 mm flat cables. The connector is designed to be pre-polished and field-installable, which means it can be easily set up without the need for extensive tools or equipment. It adheres to the IEC 61754-4 standard and offers both Single-mode UPC and APC pre-polish terminations, ensuring compatibility with existing SC connector systems. This makes it an ideal choice for a range of applications, from data centers to telecommunications infrastructure.

FEATURES

- Pre polished, pre assembled
- Internal mechanical splice (*index matching gel*)
- Visual splice indicator
- One part number for multiple cable types
- Highly stable and reliable
- IEC compliant
- Meets UL94-V0 flammability

APPLICATIONS

- Field applications
- Telecommunications
- Data centers
- Local area networks (LANs)
- FTTX networks
- Premise distribution networks
- Industrial applications

KEY BENEFITS

- ✓ **Simple termination, no adhesives, no polishing**
- ✓ **Does NOT require the use of a fusion splicer**
- ✓ **High quality matching gel**
- ✓ **Quick installation**
- ✓ **One part number suits multiple cable sizes**

Mechanical Data

	Value
Durability	500 matings
Cable Types	250 μm, 900 μm, 1.6x2 mm, 2x3 mm, 2 mm, 3 mm
Intermateability	SC (IEC 61754-4)
Polishing	PC / APC
Fiber Count	Simplex (1 channel)
Tensile IEC 61300-2-6	3N for coated fiber, 10N for round and rectangular cable

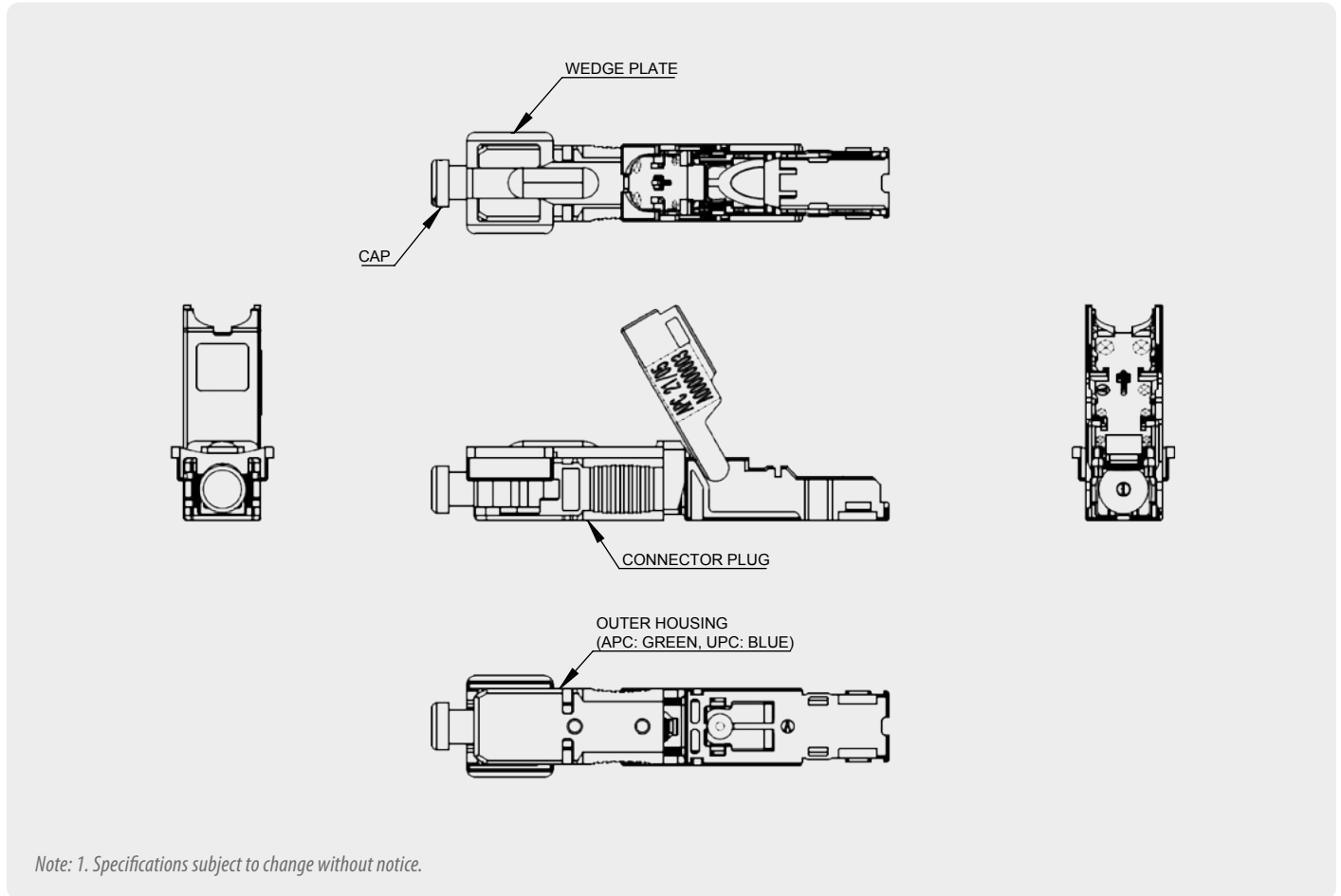
Optical Data

	Singlemode	
	UPC	APC
Typical Insertion Loss (dB)	0.2	0.3
Typical Return Loss (dB)	≥50	≥55 Angled cleaver ≥60

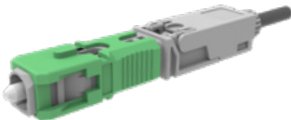
Environmental Data

	Value
Operating Temperature	-40°C to +75°C
RoHS Compliance	Yes
REACH Compliance	Yes
Humidity Resistance	95%

Connector Drawing



ORDERING



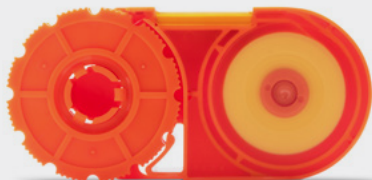
PART NUMBER	DESCRIPTION	COLOR
319-191-6	XP Fit Uni SC Connector	Blue
319-091-4	XP Fit Uni SC/APC Connector	Green

319-191-6 ORDER CODE example

Note: Specifications shown above were obtained using SENKO recommended products and procedures

Accessories - Production/Cleaning**Smart Cleaner™****Cassette**

PN: SCK-CC-100

**Smart Cleaner™****2.5 mm Clicker**

PN: SCK-SS-250

Refill PN: SCK-SS-250-R

**SC Crimp Tool**

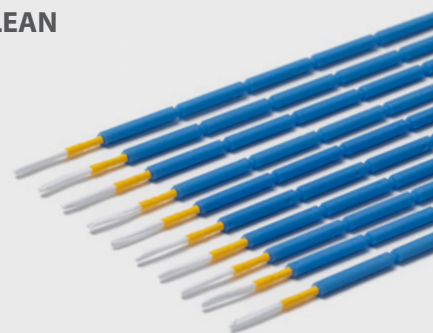
PN: CRT-401 SC, FC, ST One Piece Connectors

CRT-501 SC Connector Kit 132 Series

CRT-705 SC/LC 1.2 mm Connector

**2.5 mm NEOCLEAN****Cleaning Stick**

PN: CSK-02

**Accessories - Interferometry****SUMIX Max W+ Inspection Scope**

PN: SMX-MANTA-W+



The MANTA W+ inspection scope is designed for high-performance inspection of all types of single fiber and multi-fiber optical connectors, patch cords and bulkheads. The MANTA HM inspection scope is used to detect scratches, contamination and other surface defects as small as 0.75 μm on the end face of the connector.

SUMIX Max QM+ Inspection Scope

PN: MAX-QM+



The MAX-QS+ is a white-light and phase-shift interferometer for inspection of single fiber ST, FC, SC, LC, CS, SN, E2000™ (PC and APC), small format multi-fiber MT-RJ (PC and APC), SMA and special connectors. MAX-QS+ features portable design, autofocus, 100 micron scan range for fiber height and resolution of 1.1 μm .

Contact sales@senko.com
or visit our website for more details

Contact
SENKO

SENKO[®]

Advanced Components

sales@senko.com
1-858-623-3300

senko.com/contact